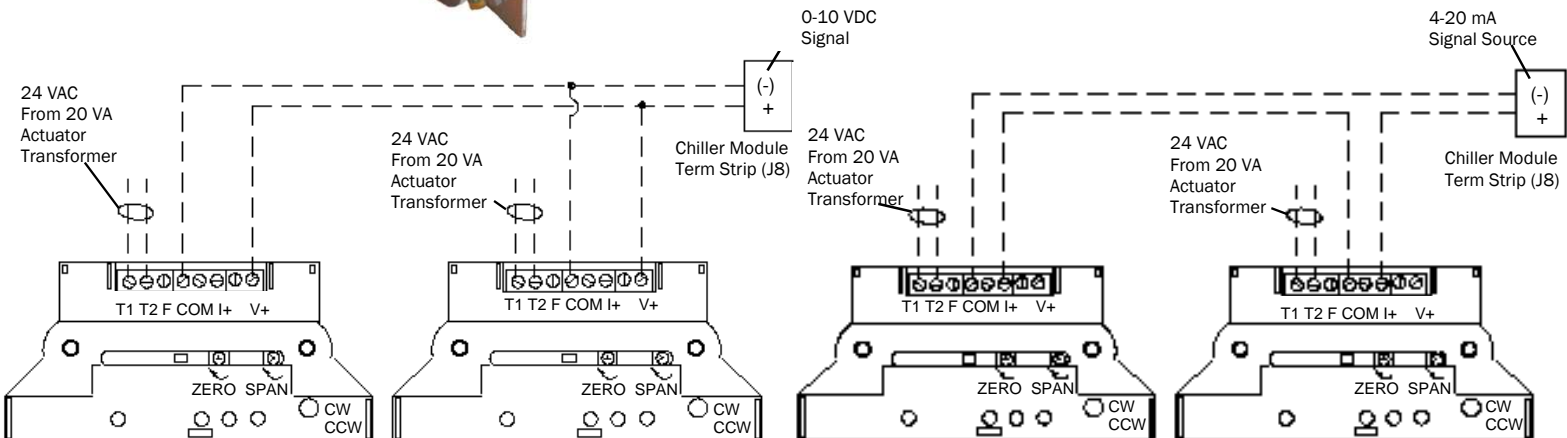
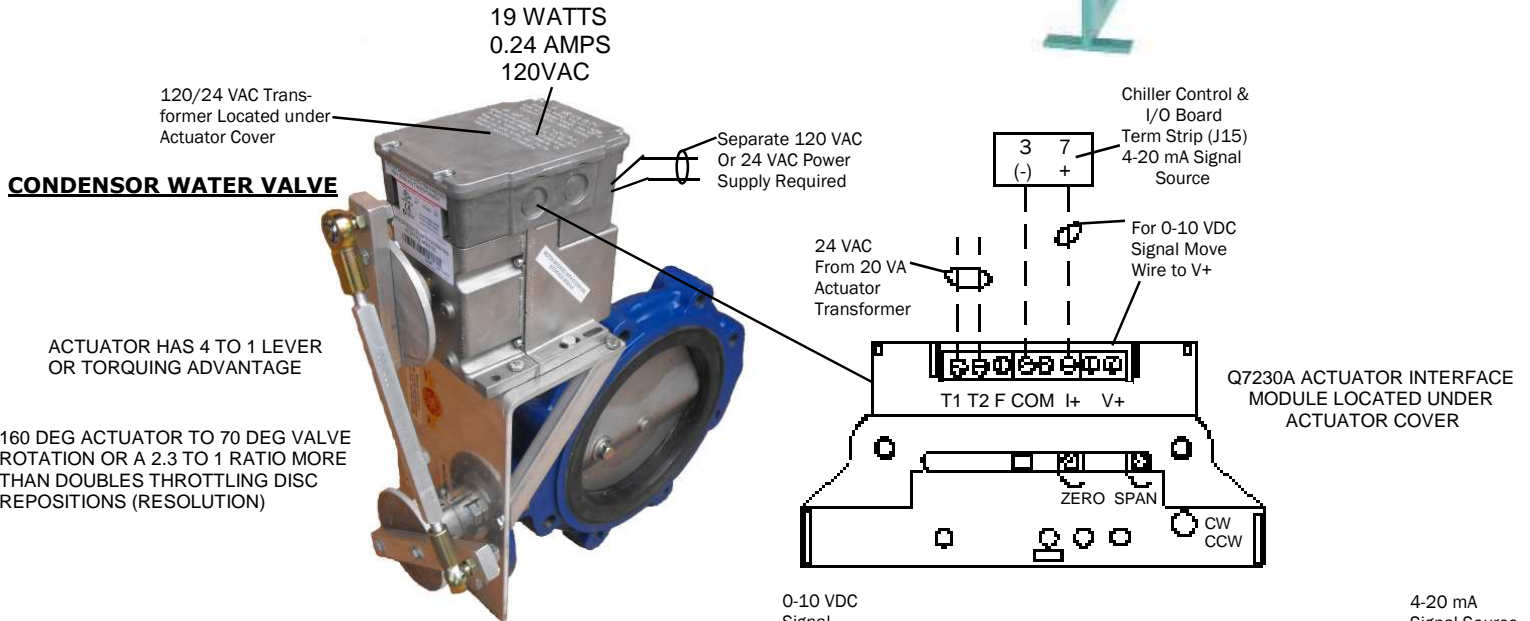


YORK YVWA SCREW CHILLER



**LARGE CHILLER HEAD PRESSURE CONTROL
REQUIRING (2) 0-10 VDC ACTUATORS
WIRING IS SAME FOR 1/3-2/3 VALVE SETUPS**

Set 1/3 Valve Assembly for 0-5 VDC & the 2/3 Assembly for 5-10 VDC
For Dual Actuator Applications set them both for 0-10 VDC

**LARGE CHILLER HEAD PRESSURE CONTROL
REQUIRING (2) 4-20mA ACTUATORS
WIRING IS SAME FOR 1/3-2/3 VALVE SETUPS**

Set 1/3 Valve Assembly for 4-12 mA & the 2/3 Assembly for 12-20 mA
For Dual Actuator application set them both for 4-20 mA



WESLEY VALVE CO.

MFGRS OF AUTOMATED BUTTERFLY VALVES
4938 S. Atlanta Rd., Ste. 100
Atlanta, GA 30339
PHN: (404) 351-8744 FAX: (404) 351-9340
www.Wesleyvalve.com

YORK YK CENTRIFUGAL CHILLER



19 WATTS
0.24 AMPS
120VAC

120/24 VAC Trans-
former Located under
Actuator Cover

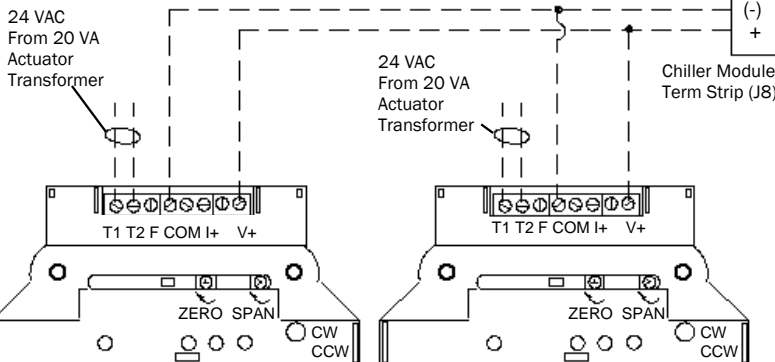
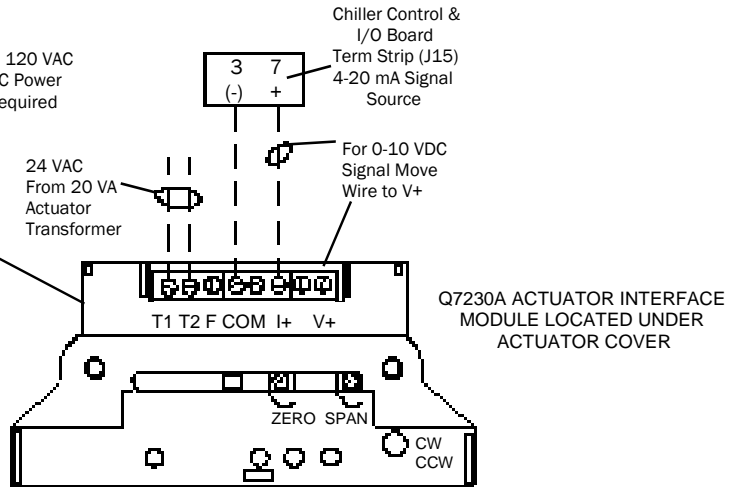
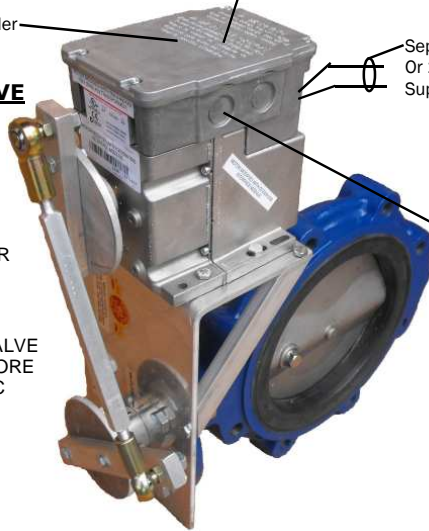
Separate 120 VAC
Or 24 VAC Power
Supply Required

Chiller Control &
I/O Board
Term Strip (J15)
4-20 mA Signal
Source

CONDENSOR WATER VALVE

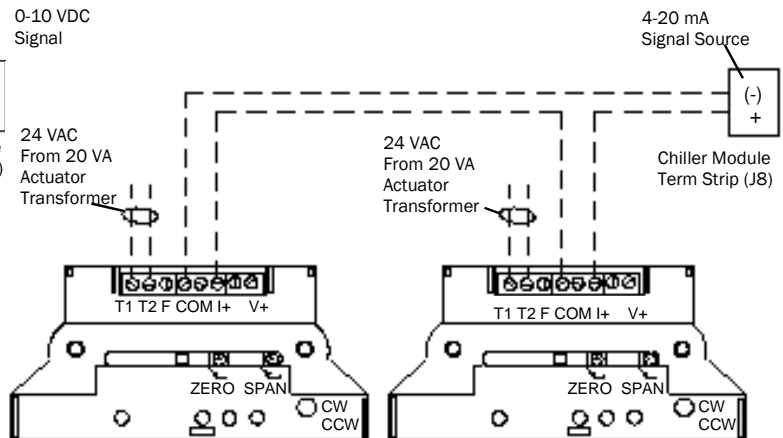
ACTUATOR HAS 4 TO 1 LEVER
OR TORQUING ADVANTAGE

160 DEG ACTUATOR TO 70 DEG VALVE
ROTATION OR A 2.3 TO 1 RATIO MORE
THAN DOUBLES THROTTLING DISC
REPOSITIONS (RESOLUTION)



LARGE CHILLER HEAD PRESSURE CONTROL REQUIRING (2) 0-10 VDC ACTUATORS WIRING IS SAME FOR 1/3-2/3 VALVE SETUPS

Set 1/3 Valve Assembly for
0-5 VDC & the 2/3 Assembly
For 5-10 VDC
For Dual Actuator Applica-
tions set them both for 0-10
VDC



LARGE CHILLER HEAD PRESSURE CONTROL REQUIRING (2) 4-20mA ACTUATORS WIRING IS SAME FOR 1/3-2/3 VALVE SETUPS

Set 1/3 Valve Assembly for
4-12 mA & the 2/3 Assem-
bly For 12-20 mA
For Dual Actuator applica-
tion set them both for 4-20
mA



WESLEY VALVE CO.

MFGRS OF AUTOMATED BUTTERFLY VALVES
4938 S. Atlanta Rd., Ste. 100
Atlanta, GA 30339
PHN: (404) 351-8744 FAX: (404) 351-9340
www.Wesleyvalve.com